





STUDIO  
DANIEL  
COSTA

THE COLLECTION  
2024 and beyond

rugs - textiles - furniture - objects - memories & thoughts



## DEAR VIEWER

Thank you for joining this visual journey through five years of work, which explores the overlap of craft, design, and art - and this is very much who I am.

I like products because they can be reproduced and because they can be accessible to more than one person. These products can improve the quality of our daily lives and routines.

I am interested in small series in which every object is similar but different because a form is investigated again and again by using the same techniques, which forces me every time to find a new way.

Art is important to me to further explore myself through matter; as such, my artworks are traces of inner journeys and developments that follow no other rule other than the desire to shed light on unknown personal aspects or to bring something urgent and immaterial into a material existence.

Surely all three disciplines have different qualities, a different focus, and a different market, but I develop a towel with no less passion or commitment than a sculpture or a piece from the small series.

In this sense, dear viewer, I wish you much joy and wonder!

Daniel Costa









a grounding fiber,  
a singing yarn,  
a vibrating cloth,

the spinning, humming and weaving of a love song  
to people, animals and the earth.





## WEAVING A CIRCLE

“The collection is rooted as much in the mountains of Nepal as it is in the mountains where I was born, South Tyrol (Italy). The mountains and their related materials, cultures, and mythologies, together with my inner mountains shape and nourish my products and creations. My textiles are carefully interwoven with the local spinners and weavers as well as with the farmers who live in these very remote areas high up in the Himalayas, where they herd yaks, harvest nettle plants, and live in a surrounding area where many of us would not be able to survive. This collection is my woven journey of heart and hand, soil and soul.”



**OUR PRODUCTS ARE  
SKILLFULLY HAND-SPUN  
AND CAREFULLY  
HAND-WOVEN**

### WILD RAW AND FERTILE

Studio Daniel Costa's rugs and textiles are innately interwoven with the mountains of Nepal, the ground where yak, sheep, and goats graze, and over thousands of years, they have adapted to whipping weathers. Where the mountains set the tone to life and survival, to mythology and craft. It is a collection of rugs, home-textiles and textile-art to bring earthy tactility, analogue quality, lasting character, and a primal emotion to our living spaces. The works are meant to connect us to the earth and our inner roots.





## OF HAND HEART AND MATTER

Studio Daniel Costa aims for the highest level of craftsmanship as well as the highest possible quality in fibre, revaluing the maker, the hand and the hand-made, durability, and the emotional and spiritual value of textile. This textile collection is the humming of a love-song to hand and fibre, matter and people, animals, plants, and the fertile soil. An ode to the hand and the hand-me-down.





## THE JOURNEY

“In 2018, when still living in Paris, I decided to follow my pursuit of textiles and went to Nepal to start my long-term research into sometimes rare or forgotten, sometimes daily and astonishingly basic, or in reverse, very intricate techniques of fiber-processing and rug crafting. I was looking for a surrounding, for people, animals, and some land - that, in symbiosis, could help me develop my first collection of rugs. Nepal gave me all of what I was seeking and surprisingly reconnected me to the mountains where I was born and where I live now again. Intensive years of working simultaneously on my rugs and textiles, on my artwork, and on my photographs have followed. They have had me travel diametrically - far out and deep into myself. Today I am very proud to present to you a part of the treasures I have found on a journey of foot and mind, of hand and heart.”







# RUGS

## THE FOUNDATION OF A HOME

“My textile journey started with rugs, as the rug is for me the first of all textiles. A rug defines a space; it is symbolically the base of a home. It needs to be strong and last for generations. It is the field, the foundation, the ground, it can be a shelter, and it is a means to give atmosphere and keep warm.”





All rugs are custom-made with an average lead time of 4 months. They mainly find residential use, but are also chosen by high-end hotels that share Studio Daniel Costa's values on quality, love for crafted textiles, principles in design, and longing for authentic atmosphere.









EARTH  
yak wool and nettle, undyed









Earth\_01



Earth\_02





Earth\_03

Earth\_04











Henge\_01

HENGE  
tibetan sheep wool and nettle





Henge\_02



undyed tibetan sheep wool and nettle







HENGE\_03 PLAIN  
tibetan sheep wool and nettle, natural dye and undyed







Henge\_02

Henge\_03

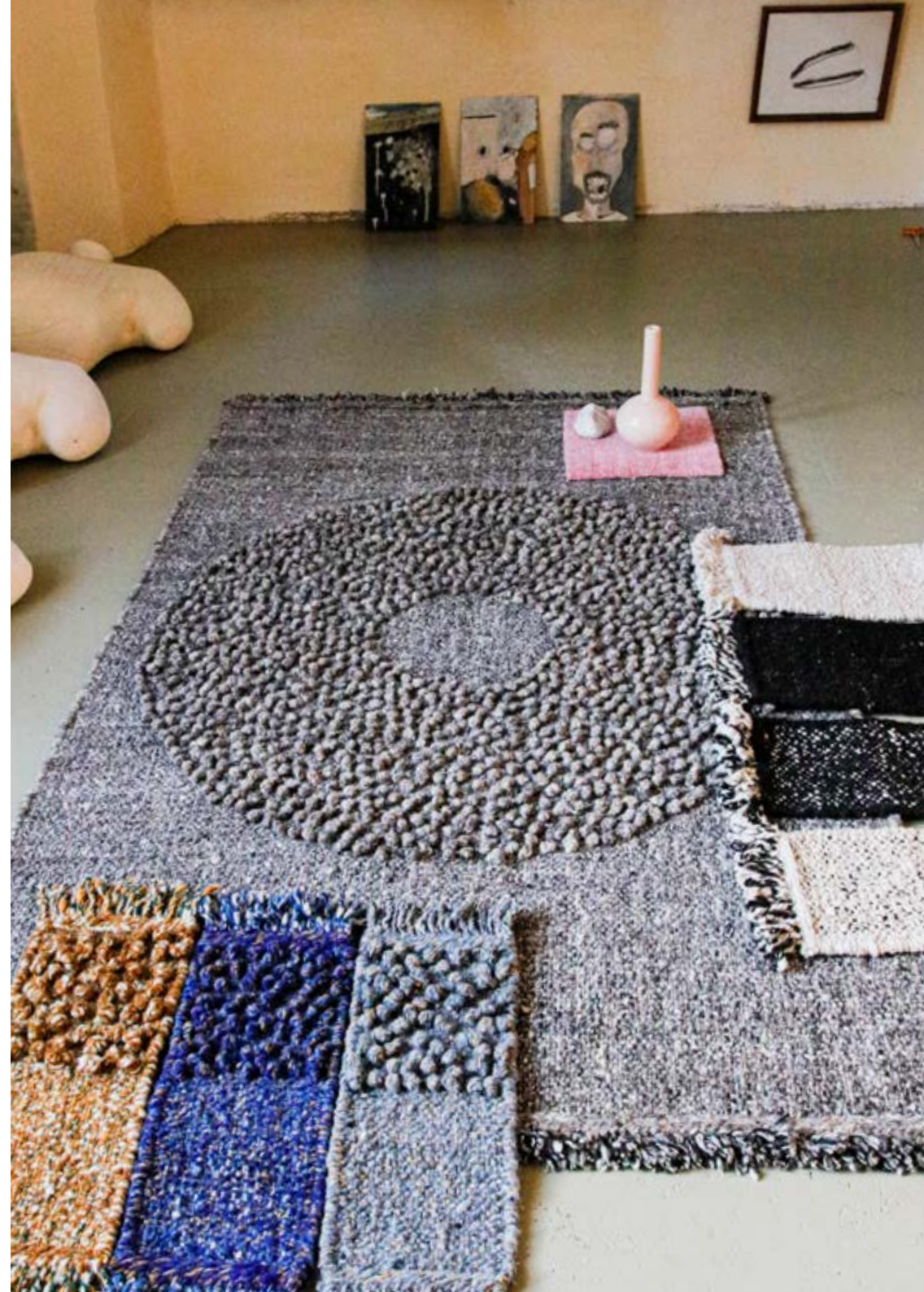
Henge\_04

Henge\_05

Henge\_01











RHADI  
undyed yak wool, hand-woven and felted







STUDIO  
DANIEL  
COSTA



produced by van Caster

















EARTHWORK  
undyed tibetan sheep wool and undyed nettle, knotted













LOAM  
tibetan sheep wool, mohair and nettle





MOUNTAIN CROW  
tibetan sheepwool, nettle and yak wool  
or hemp and yak wool







SKULL  
tibetan sheep wool, silk and nettle





FARMLAND  
tibetan sheep wool and nettlen natural dye







GRASSLAND  
tibetan sheep wool and nettle, natural dye





FLORALIA  
tibetan sheep wool, nettle and silk  
vegetable dyed







# H O M E T E X T I L E S

## LIVING WITH TEXTILES

“Every fibre has its specific properties; like every herb or stone, they have an impact on our wellbeing. I like to research these qualities and give them a place in our living spaces. Yak wool is solid; it makes me feel very safe; the nettle cleanses, structures, and vitalizes; and cashmere is soothing. In this way, every fibre or fibre mix has its place in the home and its use.”



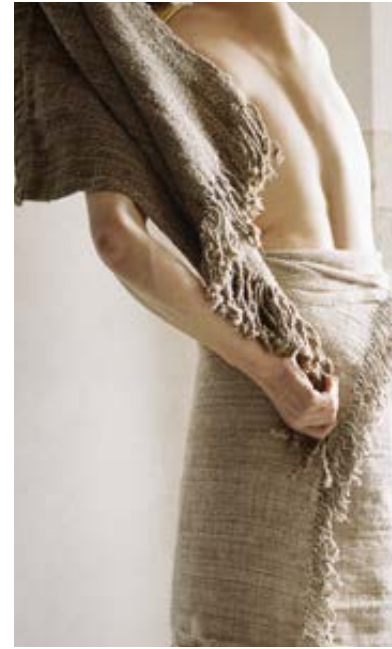


The entire collection is hand-spun and handwoven and ranges from scarfs, throws, blankets to cushions, upholstery and curtain textiles.













## ORDINARY NETTLE TOWELS

an ode to the daily moments of body care:

ordinary face towel 65x70cm

ordinary body towel 65x140cm

ordinary throw 105x180cm





BACKSTRAP-WOVEN NETTLE BLANKET







NETTLE BEDSPREAD  
260x280cm









NETTLE AND HEMP TEXTILES ON ROLLS  
in natural colour  
or in vegetable dyed colours







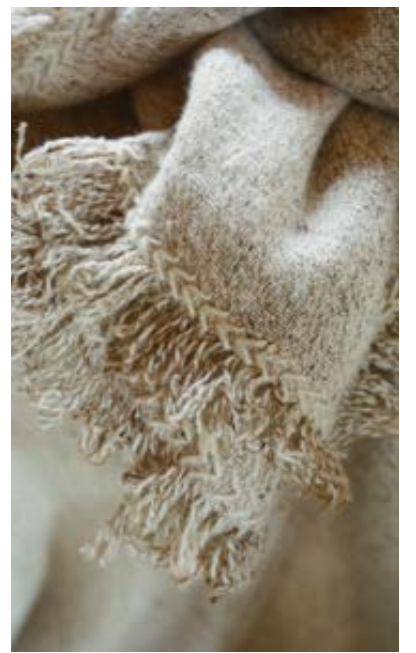






WHITE NOISE  
cashmere and nettle  
150x200cm









## APHA

100% yak wool

14x280cm

75x220cm

130x240cm

220x240cm





BODEN  
yak wool and nettle  
150x200cm





**BADALA**

100% cashmere

150x200cm





**RECYCLED CASHMERE**  
recycled cashmere and genuine cashmere  
150x200cm



# ON FIBRES

## FIBRES OF PASSION

The fibre is the beginning and expression of all textile quality; it defines the lifetime of a textile, the way it ages, and the way it lasts. Therefore Studio Daniel Costa chooses to work with selected fibres such as yak wool, nettle fibre, Tibetan sheepwool, goat hair, and others. Whenever possible, the fibres used in the collection are directly sourced from the Nepalese highlands, hills, or lowlands.

“We spend much effort and passion in finding the most authentic ones, meeting the people who produce them, understanding the landscapes where they belong, and choosing the right people and the right environment to carefully and manually process them into yarn and ultimately into a fabric.”





## THE STINGING NETTLE

Our towels and bedspreads are carefully crafted from the nettle plant (*Girardinia Diversifolia*) in a remote village in the Himalayan mountains of Nepal. The dried bark of this plant is hand processed into fibre, hand spun into yarn and finally hand woven into fabric. The stinging nettle is an ancient fibre with mythological and vitalizing properties. The power of the mountain, the fertility and rootedness of the forest, and the know-how of skilled artisans are woven and chanted into these towels.





## A BRONZE AGE TEXTILE

When approximately 2,800 years ago, one of Denmark's most powerful men died, his body was burned, and then the remains were wrapped in a cloth made from stinging nettle. These ancient fragments of nettle cloth retrieved from Lusehøj, Denmark's richest known Bronze Age burial mound, originate most likely from the Kärnten-Steiermark region in Austria.

Interesting is the parallel to Nepal, where still nowadays, in some mountain cultures, nettle cloth is regarded as one of the purest textiles and therefore is also used in burial ceremonies or by shamans.



























## THE MIGHTY YAK

The domestic yak is a descendant of the much larger wild yak, which are extremely rare and thrive happily as high as 6000 metres above sea level, revelling in freezing, low-oxygen, high-solar radiation conditions.

In order for humans to establish a firm foothold on the Himalayan highlands, yaks were needed and domesticated already 2500 years ago. The original yak is a large, spirited, cold-resistant bovine with a big heart, big lungs, and a massive long-haired coat. Both the wild yak as well as the domestic yak have a rough outer coat and a down-like precious undercoat, which is valued for its softness and warmth. The rough outer coat is used to craft ropes and textiles for tents. The undercoat, called “Khullu“ is used to weave softer textiles. The holy yak provides milk, cheese, and meat, as well as textiles for shelter and culture, but it also heats the fire places with its dried dung, and so the mighty yak is cherished for being an existential part of human life and mythology in the sparse upper Himalayas.

















## GOAT HAIR

In our rug collection, we also have pieces made from goat hair textiles. This hair is said to protect from evil, but it also protects from snakes and insects. An archaic and strong fibre for textile lovers and collectors.















# ART & DESIGN



“My passion for objects and paintings is innate; I cannot stop thinking about the fascinating excitement to materialise the immaterial, the relation of gesture and emotion, of feeling and making, which is why I am really constantly making something. Form, material, surface, texture, colour, details, and technicalities etc., it often makes me restless, and yet it has become a dear and central element of my life.”





MUNCH  
chair  
larch wood











BLACK MOON  
ca 140x280cm  
larch wood, sheep wool felt





“A night’s black moon is reflected in water, black water flows into black wood. Black flows into grey and back into black, traces from chainsaw sculpting continue into stitched lines and tickling gestures and so the dark night is tickled alive - while the two of us watch the moon in lake.”

The two seater sofa “Black Moon” is hand-crafted from alpine larch wood, a rather hard and strong wood known for its strength and durability. The wood has undergone a special process to unveil its growth rings giving us a glimpse into the shifting seasons and weathers. The textile has been felted from scrap textile and local sheep wool, it has been stitched, embroidered and embellished by hand. It is a poetic ensemble of techniques, at times rough and at times very delicate.











LA MORT DE MARAT  
bench, 210x73x80cm  
larch wood





LA MORT DE MARAT  
seat and seat with backrest  
larch wood













# STUDIO DANIEL COSTA

**photography:**  
Juliette Chrétien, Bert Cluytens and me

special thanks to you dear Juliette Chrétien for you precious support, and your sensuous photography

thank you Marc and Jean-Louis van Caster for the great collaboration.





AN IMPORTANT MATTER OF THE HEART



**studiodanielcosta@gmail.com**  
**www.studiodanielcosta.com**  
**insta: studiodanielcosta**  
**+39 377 327 4447**

**info@vancaster.be**  
**www.vancaster.be**  
**insta: vancaster.be**