

LE CHIC BOHÈME  
COLLECTION



silestone<sup>®</sup> XM

COSENTINO<sup>®</sup>

The elegance and sophistication of natural stone has been marveled at for centuries.

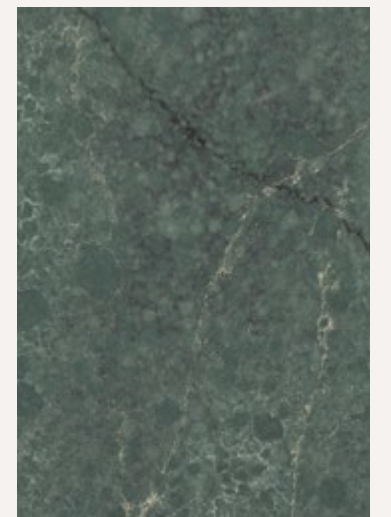
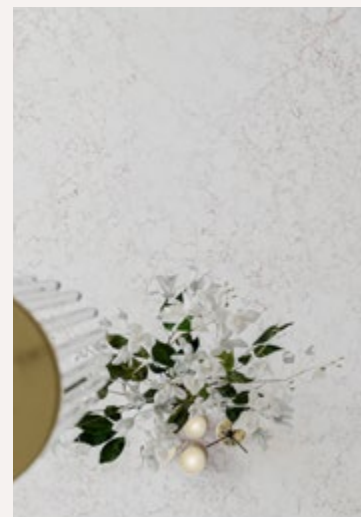
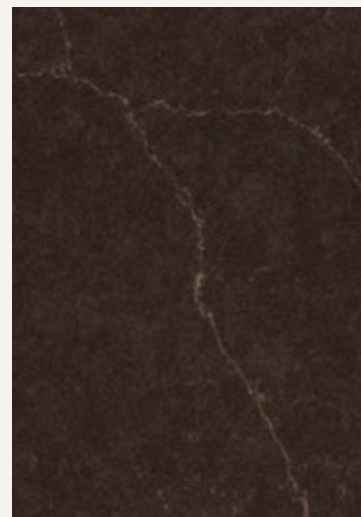
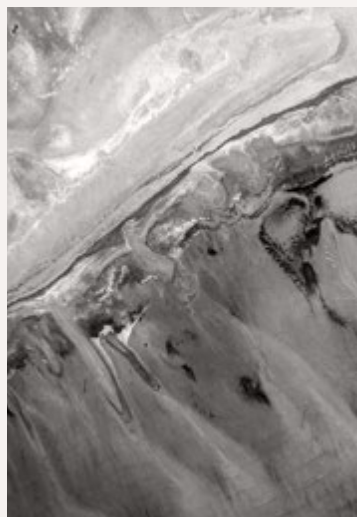
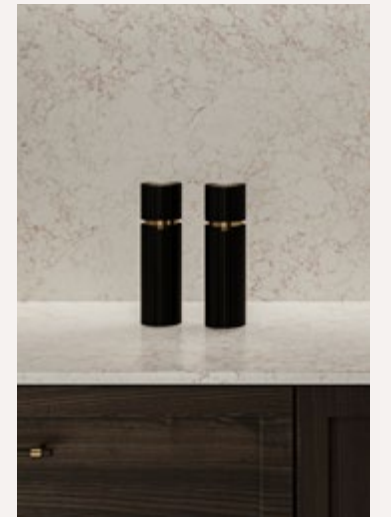
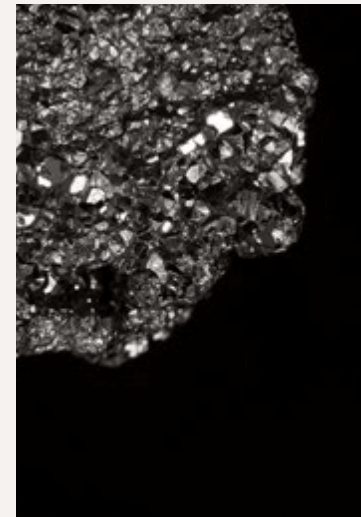
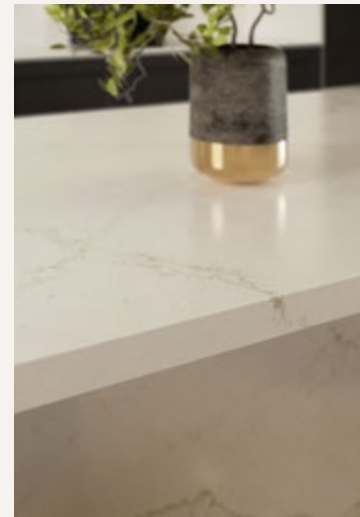
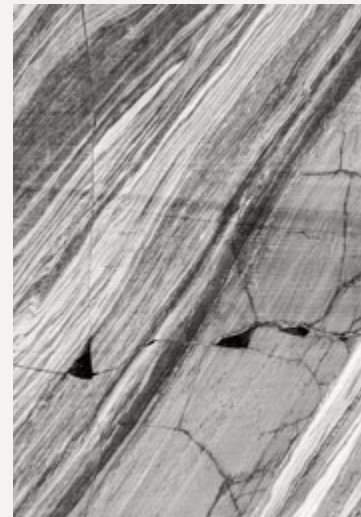
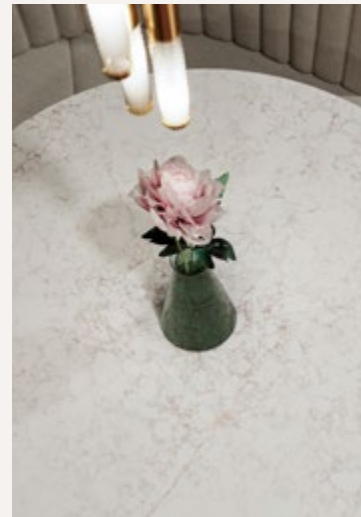
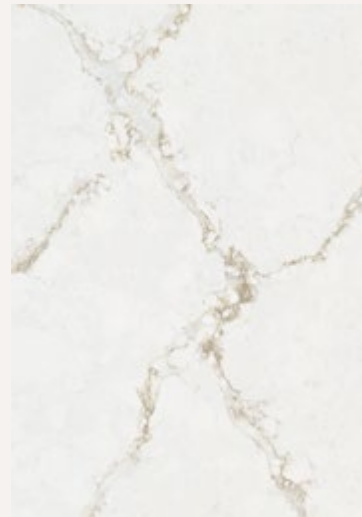
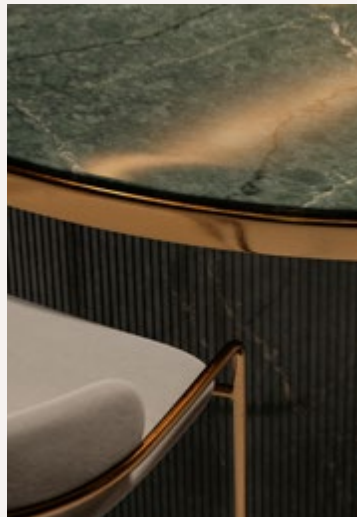
Natural Stone is undergoing a renaissance in the world of design and architecture thanks to its ability to create timeless, sophisticated, and elegant spaces.

The restoration of natural stone in the contemporary scene is focused on the exploration of its endless possibilities, featuring exceptional veins and colors to create unique designs and spaces, in which a marbled effect is used in unexpected and exciting ways.

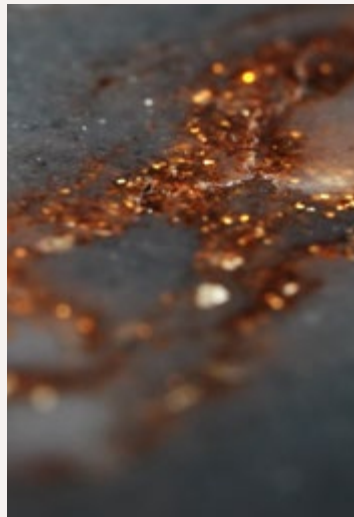
Le Chic Bohème by Silestone XM merges the beauty of natural veined stone with the technological innovation of Silestone XM, using the exclusive Hybriq® technology to create a high-performance mineral hybrid surface with outstanding beauty and the look and elegance of natural stone.

This collection features an exquisite range of colors and patterns that expand from soft and delicate hues to bold and dramatic patterns, allowing designers and architects to create unique and distinctive spaces.

The new Le Chic Bohème collection is a celebration of natural beauty and sustainability inviting you to explore creativity and innovation through design and architecture.



UNIQUE PATTERNS  
& DESIGNS



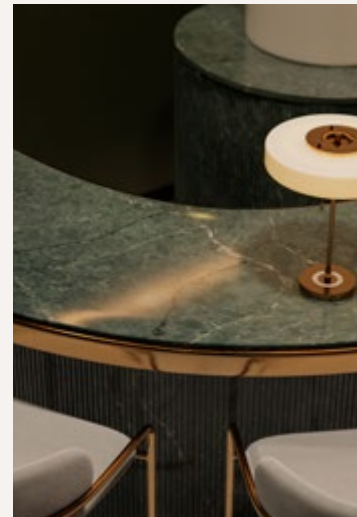
Elevate spaces with elegance and sophistication, creating unique environments.

REAL  
FULL BODY



Integrated veined design across the entire surface & thickness enabling finishes on edges and recesses with full continuity.

NATURAL STONE  
TOUCH & FEEL



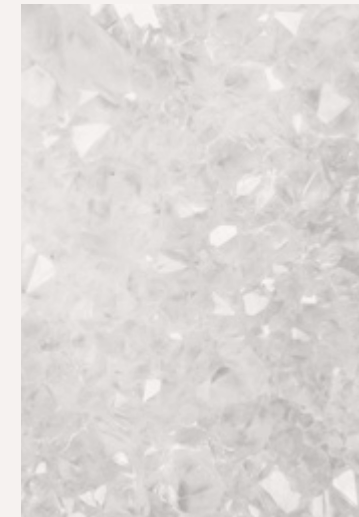
An authentic look and feel that recreates the texture, depth, and warmth of natural stone, but with greater resistance and practicality.

MINERAL  
COMPOSITION



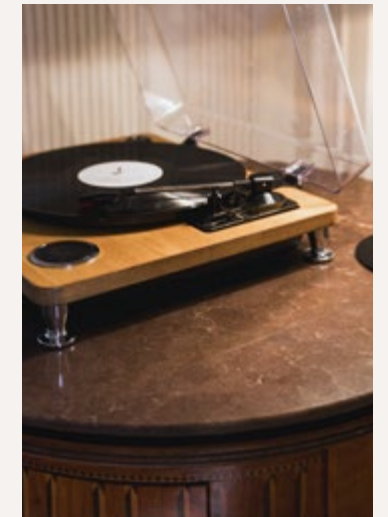
High performance, low maintenance and resistance to impacts and thermal shock by recently used pans, with a maximum of 10% crystalline silica.

SUSTAINABLE  
INNOVATION



Crafted with our exclusive Hybriq+® technology, utilizing a minimum of 20% recycled materials, such as glass, in the surface's composition.

VERSATILITY IN  
INTERIOR SPACES



Its design and double-sided polishing makes it versatile for interior applications in kitchen, bath, and furniture, such as countertops, cladding, sinks, trays and tables.

## LE CHIC BOHÈME

### THE COLLECTION

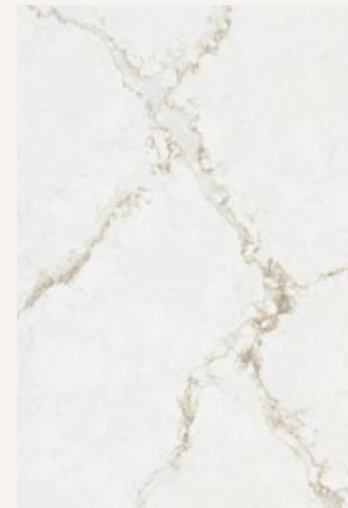
The essence of Parisian sophistication and bohemian flair comes to life in Le Chic Bohème by Silestone® XM, a new collection where elegance and freedom reign supreme. Le Chic Bohème is the echo of evenings in Montmartre's hills, the golden sunsets along the banks of the Seine, and the inspiration of the City of Lights.

The four new color structures of Le Chic Bohème awaken the imagination with their unique shades, elegant veining, and nuanced patterns, marrying depth and sophistication to celebrate individuality and a passion for authenticity.

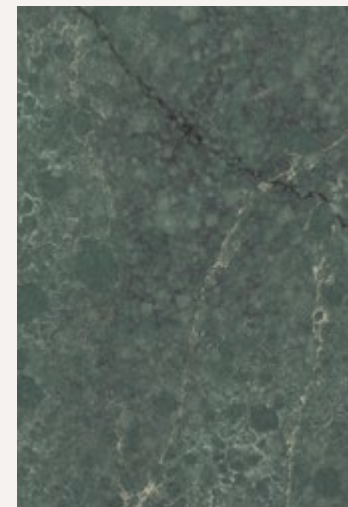
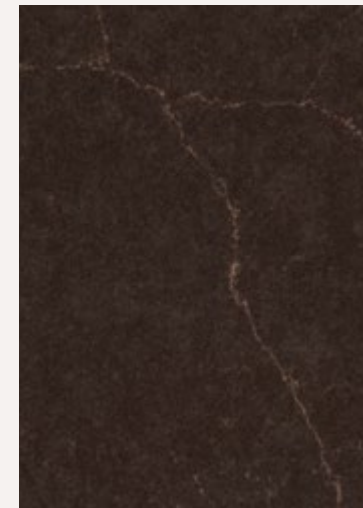
Journey into a radiant landscape where art and style intertwine.



BLANC ÉLYSÉE



CHÂTEAU BROWN



JARDIN EMERALD



RIVIÈRE ROSE

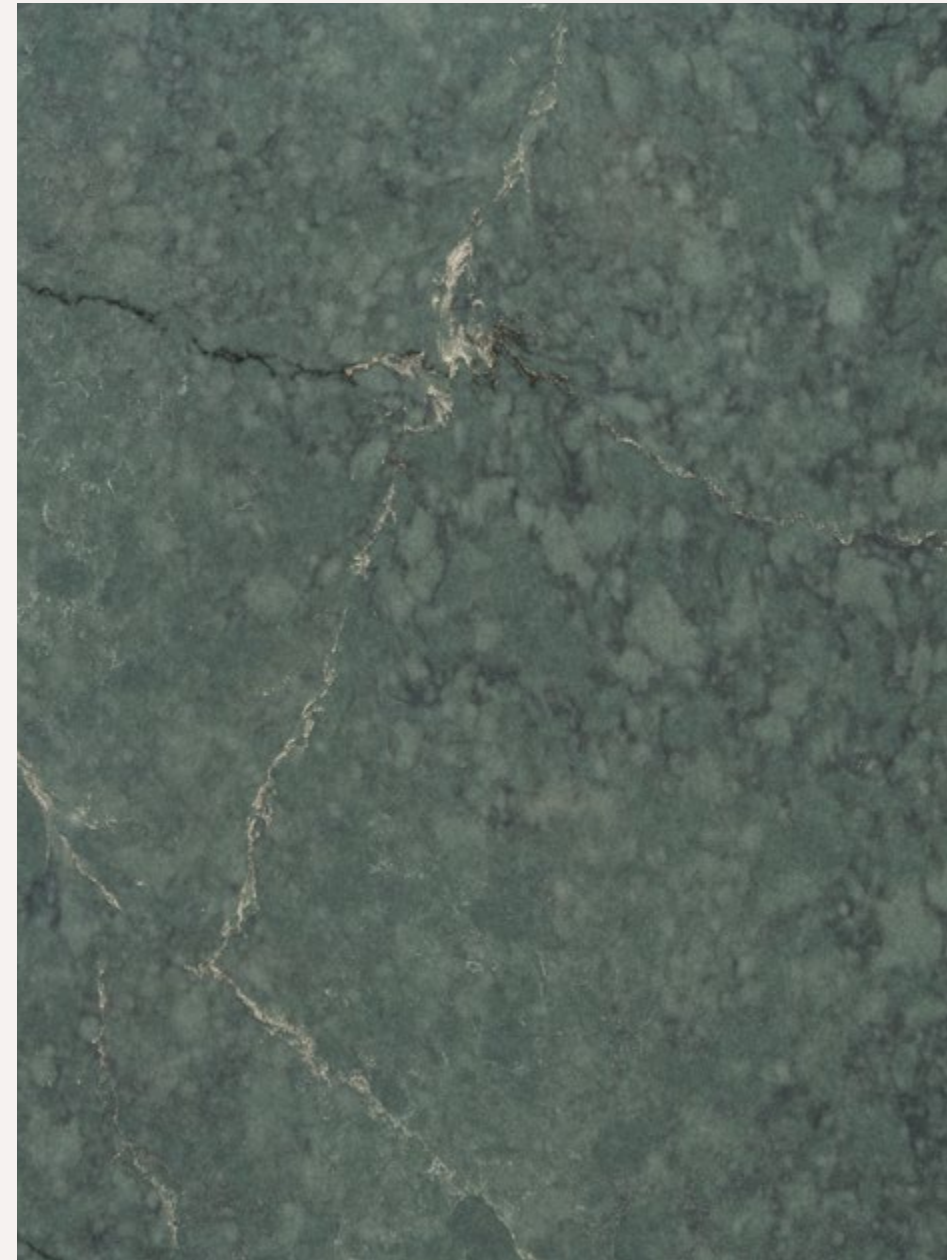
## Jardin Emerald

Nature's symphony captured in hues of green, evoking the beauty of Parisian gardens on a sunny day.



## JARDIN EMERALD

Color detail



Thanks to a sophisticated pattern of golden veins with metallic accents and black and cream color notes, Jardin Emerald reinvents the natural beauty of the most exclusive green marbles, creating a versatile finish with great graphic depth.



LE CHIC BOHÈME COLLECTION

The color richness of Jardin Emerald creates a pattern that, even if non-existent in nature, renders the look and touch of natural stone. In this kitchen, its golden veins over a green background perfectly

complement the coal gray tones in the furniture and brass décor elements, achieving a sophisticated yet sober composition.

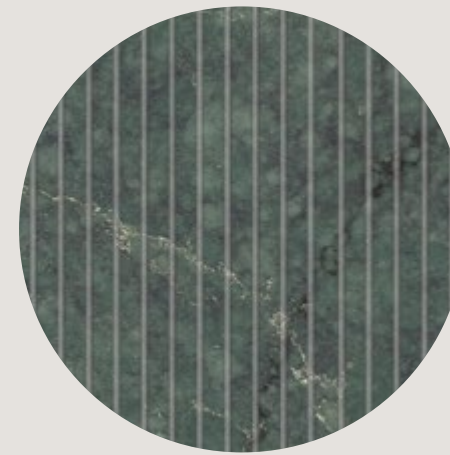


MINERAL HYBRID SURFACES





Silestone XM full-body design makes the surface pattern visible through different edges and cuts. This way, you can create curved, die-cut or milled cuts while keeping the design and properties of the material, such as the low porosity and resistance to impact, scratches and stains. Its elegance and functionality makes Jardin Emerald the perfect partner for spaces and applications with intensive use. In the picture, the UKIYO GV3 fluted texture gives sophistication to this bar without losing the vein or color depth.



Jardin Emerald  
Le Chic Bohème Collection  
Finished with UKIYO GV3



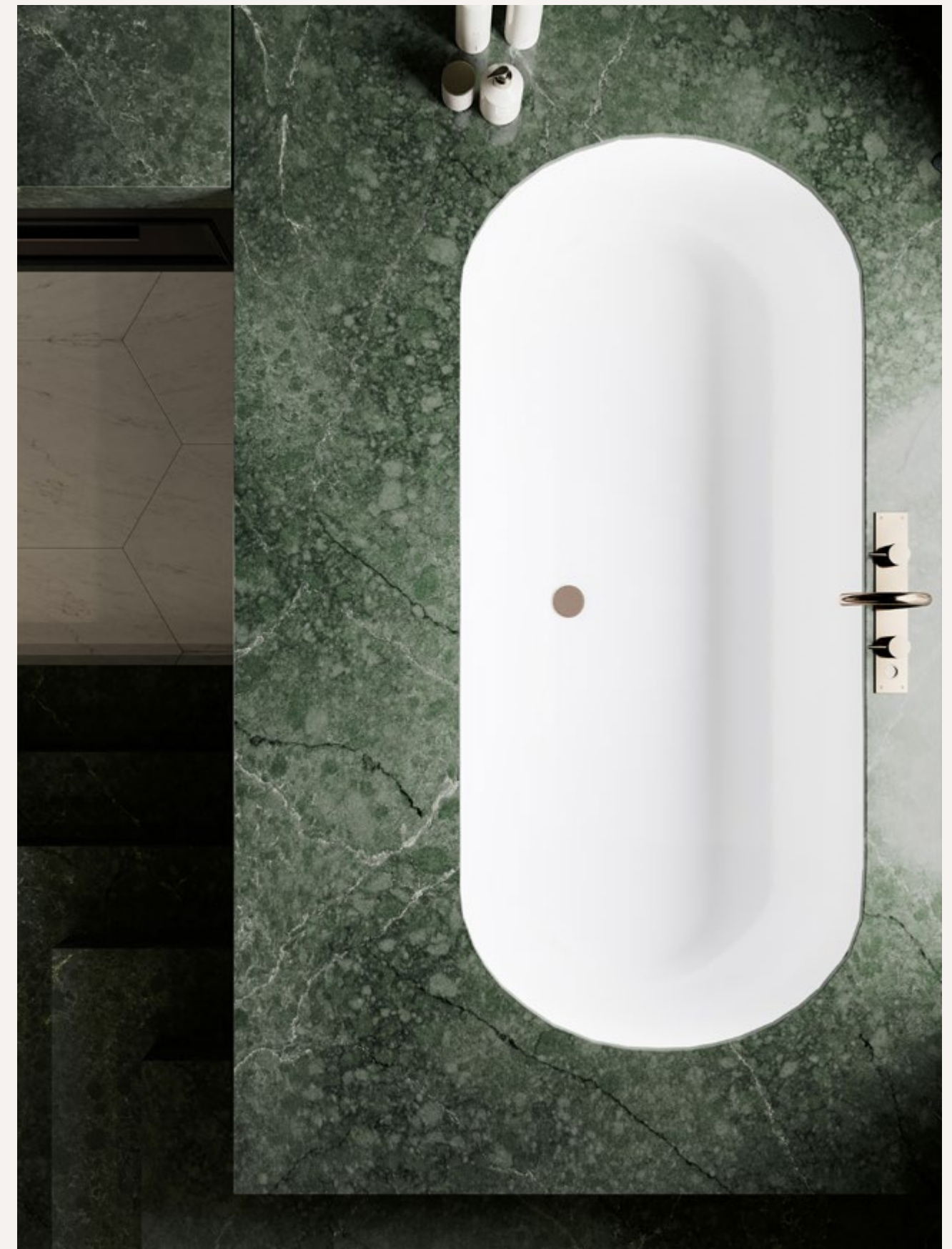


Jardin Emerald  
Le Chic Bohème Collection  
Available in Suede and Polished finish



The exclusive mineral composition of Silestone XM gives Jardin Emerald a unique design that, thanks to its low porosity and liquid absorption, is especially suited for wet spaces such as spas or bathrooms. Combined with golden elements in the mirrors or

brass taps, Jardin Emerald creates theatrical, long-lasting and low-maintenance ambiances. Water and soap will be enough to keep the beauty of this bathroom for years.



Jardin Emerald

## Rivière Rose

Transport yourself to the sun-kissed shores of the French Riviera with this warm white canvas adorned by blush pink and taupe veins.



## RIVIÈRE ROSE

Color detail

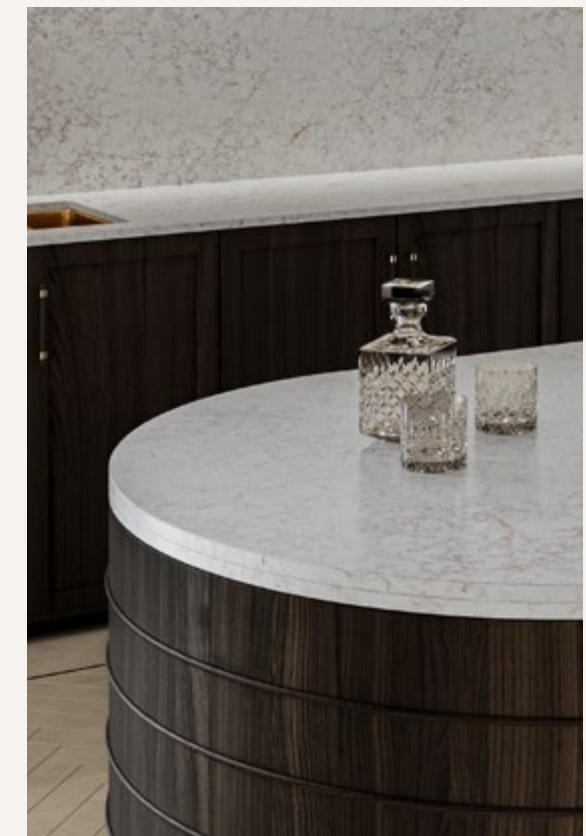


An relentless sea of taupe and blush pink veins give personality to a warm white background. Rivière Rose pays homage to the whimsical patterns of ocean waves as they break on the coast of the French Riviera.





The dynamic veins of Rivière Rose's design enhance the movement in this kitchen with curved lines. The remarkable richness and depth of this marble-like surface with pink and gray accents highlights the many hues in ebony wood. The island countertop features a double edge with 12+12 mm thickness, creating an interesting play off the veins direction. This type of design allows for great customization, combining other Silestone XM colors in different areas and even other materials such as brass.









In this kitchen, the bold taupe and blush pink patterns of Rivière Rose's veins are combined with cadet gray furniture moldings, creating a classic yet contemporary design. Rivière Rose daringly extends from countertops, with 20 mm edges, to a waterfall island, with an overedge of 40 mm, passing through

the backsplash in the cooking area and the extractor hood cladding. The low porosity of Silestone XM makes this surface especially suited for busy work areas where easy-maintenance and cleaning is a must.



Rivière Rose  
Le Chic Bohème Collection  
Available in Suede and Polished finish



MINERAL HYBRID SURFACES





Rivière Rose

## Château Brown

This shade embraces wisps of copper pink and bronze veining that intertwine to create a one-of-a-kind composition eliciting a connection to the earth with an elevated sophistication.



## CHÂTEAU BROWN

Color detail



A subtle marble look over an elegant dark brown background is filled with light and reflections of metallic pink-copper and bronze veining. A daring composition that connects with earthy tones and on-trend design.



LE CHIC BOHÈME COLLECTION

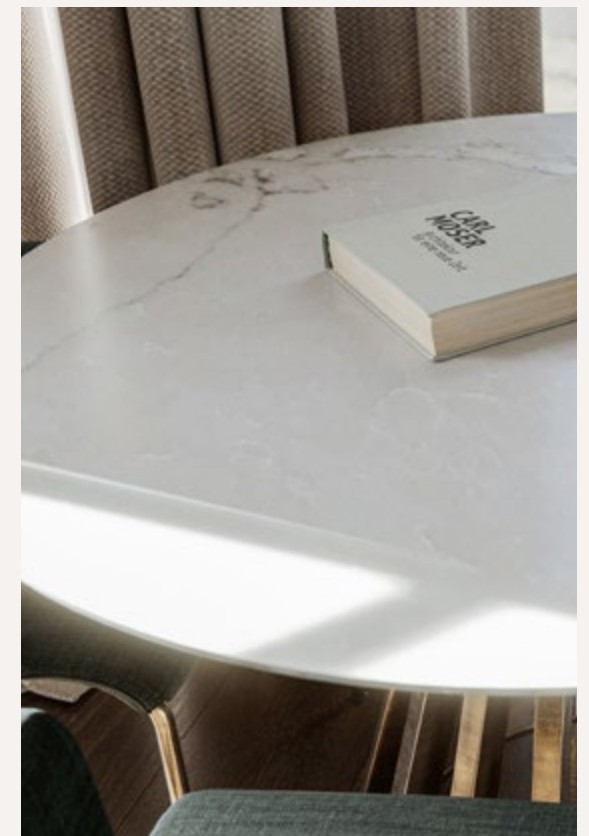
Silestone XM's variety of thicknesses (12, 20 and 30 mm) allows the creation of pieces with natural finishes that would not be possible with stones such as marble or granite due to weight or handling.

In this kitchen, for instance, a dramatic color-block effect has been achieved using Château Brown in a shelving cabinet as well as in the waterfall countertops and backsplash.





Silestone XM's large format slabs (up to 63 x 128 inches in Jumbo format) allows for continuous designs with jointless surfaces, like this immense island in Château Brown. Thanks to its resistance to humidity and stains, that same color is used on the walls at the cooking station. The brown marble-look enhances the space's depth without losing its brightness with metallic veins in copper and bronze.





The veining continuity along the full body of Château Brown allows for curved cuts and other designs without losing the pattern on the edge.

In this dining table, natural beauty is combined with a great durability, high resistance, easy maintenance and a very exclusive design.



Château Brown  
Le Chic Bohème Collection  
Available in Suede and Polished finish



## Blanc Élysée

The timeless elegance of Paris is captured in this classic design, where warm and cool tones create a chic yet unexpected proposal, accented by gold, copper, and gray veining.



\*

## BLANC ÉLYSÉE

Color detail



A delicate lattice of golden, gray, and copper veins along with graphic depth runs through a bright cream background that updates the timeless elegance of classic Parisian palaces.



The authentic touch and stone-look of Blanc Élysée enables the quality of the finish in this kitchen integrated with the living room, featuring elegant details such as a striking waterfall design on the island countertop.

Silestone XM's high resistance to stains and scratches guarantee its beauty will stay unaltered through the years.





LE CHIC BOHÈME COLLECTION

The combination of different golden, gray, and copper hues in Blanc Élysée bring a modern touch to the classic marble patterns, creating warm spaces enhanced with the velvet touch of Silestone XM's Suede finish.

By mixing it with dark woods, olive green tapestries, and smoked glass details, you will achieve a complete integration with the living room.

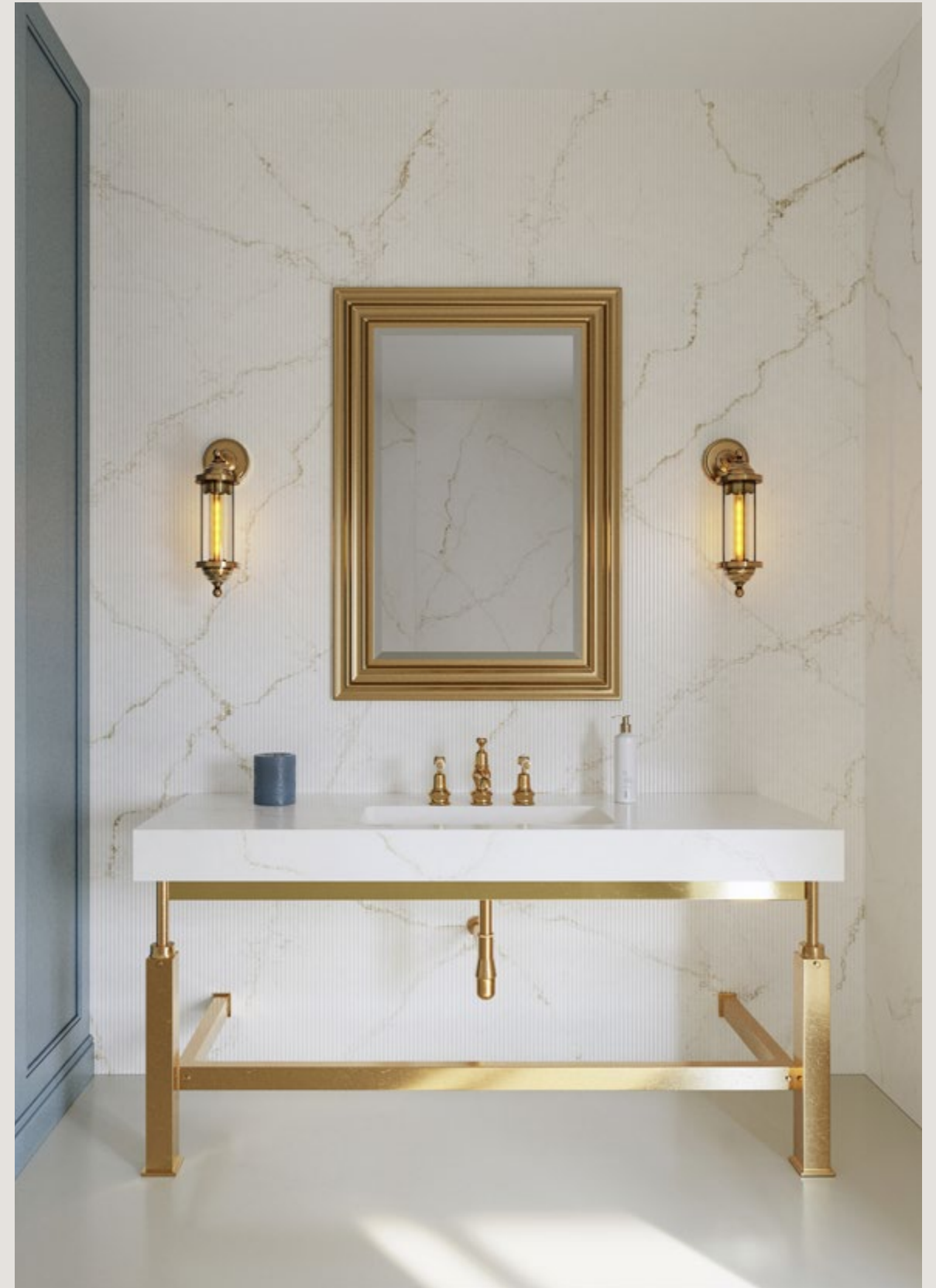




Silestone XM colors come with a full-body design, allowing you to create rounded, curved, and many other cuts without losing the continuity of veining. In this bathroom, Blanc Élysée's pattern keeps a continuous marble effect through the UKIYO GV3 fluting surface. This texture provides verticality to a space, resulting in a modern, classic style.



Blanc Élysée  
Le Chic Bohème Collection  
Finished in UKIYO GV3



Blanc Élysée




**NORTH AMERICA  
HEADQUARTERS**


355 Alhambra Circle Suite 1000,  
Coral Gables, FL 33134 ,  
United States of America  
+1 786.686.5060

[www.cosentino.com](http://www.cosentino.com)

[www.silestoneusa.com](http://www.silestoneusa.com)

   @CosentinoUSA

 SilestonebyCosentino

 SilestonebyCosentino

 Silestone

